

Violent Love

Glockenspiel

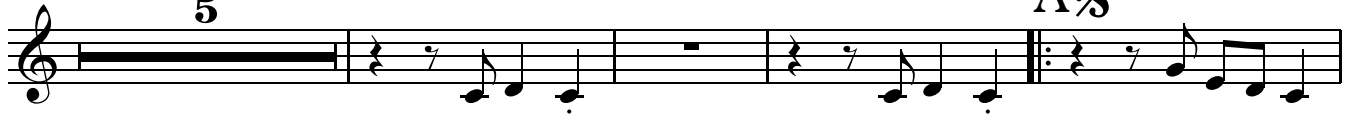
Willie Dixon

Arr: Elfman/Hubbub

♩ = 160

5

A. §



D.S.1 Repeat 4x, Tacit Melody

10 D.S. 2 No Repeats, Take Coda

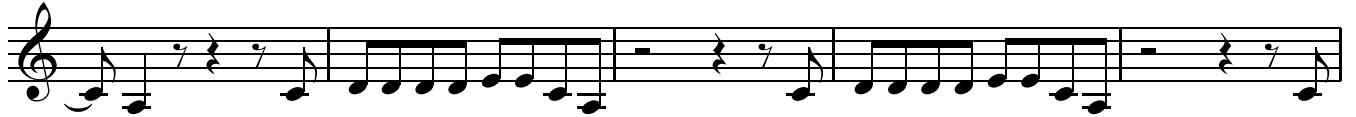


15

⊕ B



20



25



31

D.S. 1 as Noted

D.S. 2 al Coda

⊕

Coda

Repeat 7X

1.



cresc...poco....a.....poco

Accordion

Violent Love

Willie Dixon

Arr: Elfman/Hubbub

♩ = 160

Musical notation for measures 1-4, featuring a melody in the treble clef and a bass line in the bass clef.

5

A

Musical notation for measures 5-8, ending with a double bar line and a Coda symbol.

10 D.S. 1 Repeat 4x, Tacit Melody
D.S. 2 No Repeats, Take Coda

Musical notation for measures 10-16, including chord symbols: G7, Am7, F, E, F, G, C, B°, Am, Dm, C.

17 B

Musical notation for measures 17-22, including chord symbols: Dm, Em, Am, Dm, Em, Am.

23

Musical notation for measures 23-27, including chord symbols: Dm, Em.

28

D.S. 1 as Noted
D.S. 2 al Coda

Musical notation for measures 28-31, including chord symbols: Am.

32

Coda
Repeat 7X

1.

Musical notation for the Coda section, including chord symbols: C, B°, Am, F, Am, F, C.

Violent Love

Bb Clarinet

Willie Dixon

Arr: Elfman/Hubbub

$\text{♩} = 160$

5 $\text{A} \text{ } \text{§}$

D.S.1 Repeat 4x, Tacit Melody

D.S. 2 No Repeats, Take Coda

11

16 B

21

26

D.S. 1 as Noted
D.S. 2 al Coda

32 Coda Repeat 7X

cresc...poco....a.....poco

Violent Love

E♭ Alto Sax.

Willie Dixon

Arr: Elfman/Hubbub

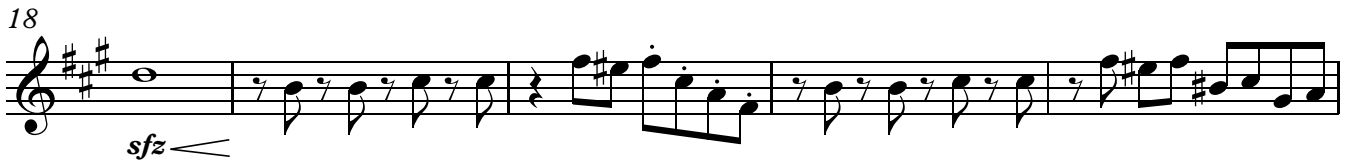
♩ = 160



D.S. 1 Repeat 4x, Tacit Melody



D.S. 2 No Repeats, Take Coda



D.S. 1 as Noted

D.S. 2 al Coda



Repeat 7X

Coda



Violent Love

Bb Tenor Sax.

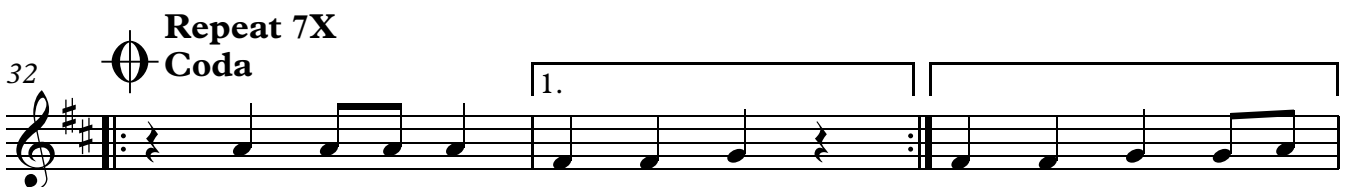
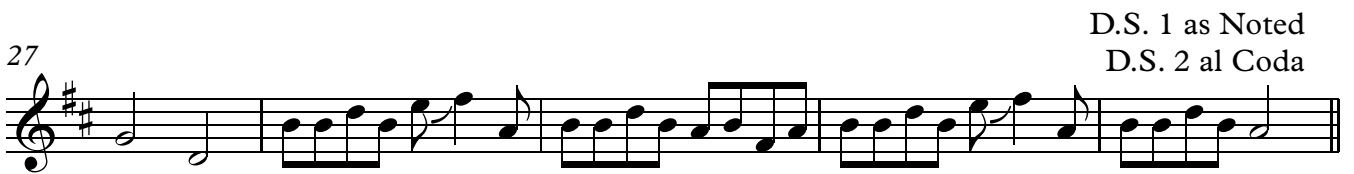
Willie Dixon

Arr: Elfman/Hubbub

♩ = 160



sfz



Violent Love

1st Bb Trumpet

Willie Dixon

Arr: Elfman/Hubbub

$\text{♩} = 160$

5

A. §

D.S. 1 Repeat 4x, Tacit Melody

D.S. 2 No Repeats, Take Coda

11

16

♩ B

sfz \leftarrow

21

D.S. 1 as Noted

D.S. 2 al Coda

26

32

♩ Coda Repeat 7X

cres...poco...a.....poco

Violent Love

2nd + 3rd Bb Trumpet

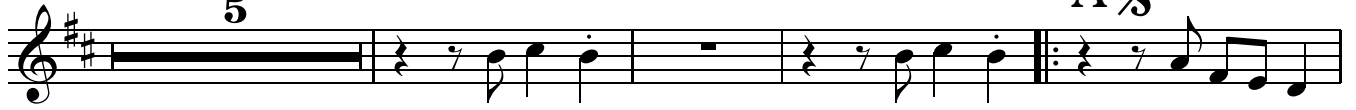
Willie Dixon

Arr: Elfman/Hubbub

A $\text{\textcircled{S}}$

$\text{♩} = 160$

5



D.S.1 Repeat 4x, Tacit Melody

D.S. 2 No Repeats, Take Coda

10



15

$\text{\textcircled{B}}$ **B**



21



D.S. 1 as Noted

D.S. 2 al Coda

26



32

$\text{\textcircled{C}}$ **Coda Repeat 7X**



cres...poco....a.....poco

Violent Love

Baritone

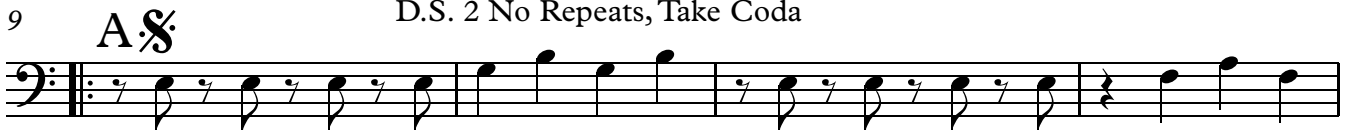
Willie Dixon

Arr: Elfman/Hubbub

$\text{♩} = 160$



D.S. 1 Repeat 4x, Tacit Melody
D.S. 2 No Repeats, Take Coda



D.S. 1 as Noted
D.S. 2 al Coda



Repeat 7X
Coda



Violent Love


Trombone

Willie Dixon


Arr: Elfman/Hubbub

♩ = 160

3

9 **A** 

D.S. 1 Repeat 4x, Tacit Melody
D.S. 2 No Repeats, Take Coda

13  **B**

18

22

26

D.S. 1 as Noted
D.S. 2 al Coda

32 **Repeat 7X**
Coda

1.

Violent Love

Tuba

Willie Dixon

Arr: Elfman/Hubbub

$\text{♩} = 160$



D.S.1 Repeat 4x, Tacit Melody
D.S. 2 No Repeats, Take Coda

6

A §



11



15

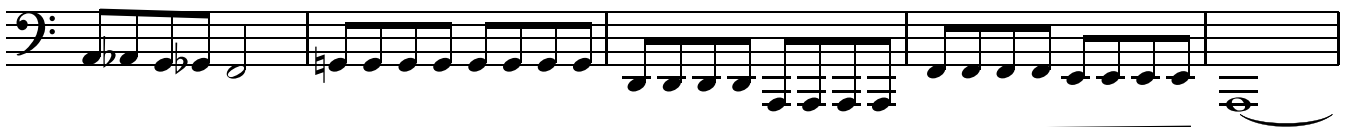
⊕ B



19



24



29

D.S. 1 as Noted
D.S. 2 al Coda

⊕

Coda

Repeat 7X



33

1.



Violent Love

Snare Drum

Willie Dixon

Arr: Elfman/Hubbub

♩ = 160

cymbal crash on one if possible here

3



8 **A** D.S.1 Repeat 4x, Tacit Melody
D.S. 2 No Repeats, Take Coda



14 **B**



19



25

cymbal crash on one if possible here



Repeat 7X

30 cymbal crash on one if possible here D.S. 1 as Noted **Coda**
D.S. 2 al Coda



Violent Love

Tenor Drums

Willie Dixon

Arr: Elfman/Hubbub

♩ = 160

4

A



D.S.1 Repeat 4x, Tacit Melody

10 D.S. 2 No Repeats, Take Coda



15

B



20



25



31 D.S. 1 as Noted
D.S. 2 al Coda



Coda

Repeat 7X

1.



Violent Love

Bass Drum


Willie Dixon

Arr: Elfman/Hubbub

♩ = 160

4



9 **A**  D.S.1 Repeat 4x, Tacit Melody
D.S. 2 No Repeats, Take Coda



13



17 **B**

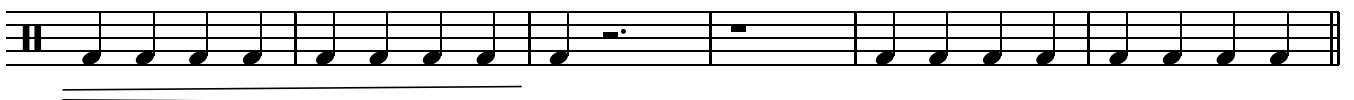


22



26

D.S. 1 as Noted
D.S. 2 al Coda



32  **Repeat 7X**
Coda

