

Flute

Bad

Michael Jackson (1987)

♩ = 112

2 Dm⁷ 4

7 1. 8

13 2. Dm⁷ Em⁷ F#m⁷

17 Em⁷ F#m⁷ Em⁷ F#m⁷ F⁶ Dm⁷

23

B♭ Harmony

Bad

Michael Jackson (1987)

♩ = 112

2 Em⁷ 4

8 1. 8

13 2. Em⁷ F#m⁷ G#m⁷

17 F#m⁷ G#m⁷ F#m⁷ G#m⁷ G⁶ Em⁷

22

B♭ Melody

Bad

Michael Jackson (1987)

♩ = 112

Em⁷



7

1.



13

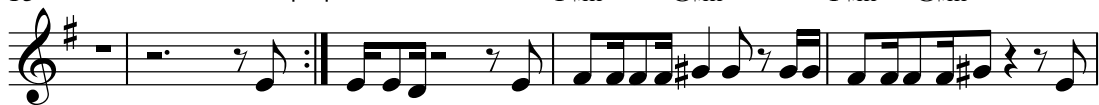
2.

F#m⁷

G#m⁷

F#m⁷

G#m⁷



18

F#m⁷

G#m⁷

G⁶

Em⁷



23



E \flat Harmony

Bad

Michael Jackson (1987)

$\text{♩} = 112$

2 Bm^7 4

8 1. 8

13 2. Bm^7 $C\#m^7$ $D\#m^7$

17 $C\#m^7$ $D\#m^7$ $C\#m^7$ $D\#m^7$ D^6 Bm^7

23

E♭ Melody

Bad

Michael Jackson (1987)

♩ = 112

Bm⁷



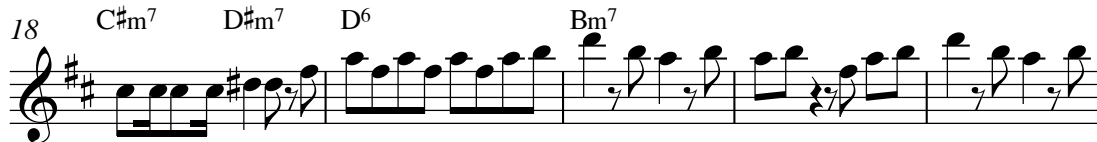
7



12



18



23



Trombone

Bad

Michael Jackson (1987)

♩ = 112

Dm7

First staff of music (measures 1-6). Measure 1 starts with a double bar line and repeat sign. Measure 2 has a fermata. Measure 3 has a fermata. Measure 4 has a fermata. Measure 5 has a fermata. Measure 6 has a fermata. Chord Dm7 is indicated above measure 4.

Second staff of music (measures 7-11). Measure 7 has a fermata. Measure 8 has a fermata. Measure 9 has a fermata. Measure 10 has a fermata. Measure 11 has a fermata. First ending bracket covers measures 9-11.

Third staff of music (measures 12-16). Measure 12 has a fermata. Measure 13 has a fermata. Measure 14 has a fermata. Measure 15 has a fermata. Measure 16 has a fermata. Second ending bracket covers measures 14-16. Chords Em7 and F#m7 are indicated above measure 16.

Fourth staff of music (measures 17-21). Measure 17 has a fermata. Measure 18 has a fermata. Measure 19 has a fermata. Measure 20 has a fermata. Measure 21 has a fermata. Chords Em7, F#m7, Em7, F#m7, F6, and Dm7 are indicated above measures 17-21.

Fifth staff of music (measures 22-25). Measure 22 has a fermata. Measure 23 has a fermata. Measure 24 has a fermata. Measure 25 has a fermata. Chords are indicated above measures 22-23.

Tuba

Bad

Michael Jackson (1987)

♩ = 112

7 8 9 10 11 12 13 14 15 16

Dm⁷ **2** **2**

17 18 19 20 21 22 23 24 25 26

2 1.

27 28 29 30 31 32 33 34 35 36

2. Em⁷ F#m⁷

37 38 39 40 41 42 43 44 45 46

17 Em⁷ F#m⁷ Em⁷ F#m⁷ F⁶ Dm⁷

47 48 49 50 51 52 53 54 55 56

2 **2**